



Controlled
Access

ctrIARM

*The safest way
to send and control who sees your digital files*

About ctrlARM

The primary function of ctrlARM is

to give the owner/author of a digital file ongoing, real-time control over the file after it is shared with others.

To our knowledge, there is no other program which can restrict access to a digital file after it is created, other than by requiring the entry of a password, using biometric authentication or inserting a physical device such as a USB dongle.

And, certainly no program exists that enables the author/owner of a file to be notified when access to their file is attempted by a 3rd party at a later date.



ctrlARM is:

A web-based application with a single file format (ctrlARM) that can be used by the author/owner of a digital file to control, among other things,

- who may access a particular file (or group of files),
- when they may access it,
- where they must be to access it,
- and the physical device that must be used to open it.

How ctrlARM works:

The Author of a file in a format supported by ctrlARM, uploads the file (squeezes it) to create a ctrlARM file.

ctrlARMed files when they are created are compressed and encrypted using a proprietary process to secure files from unauthorized access.



ctrlARM files can be dragged and dropped into folders and sub-folders to organize and manage the file contents by topic or User.

When a ctrlARM file is shared, the Recipient receives an email invitation to register to use ctrlARM (if they're not already registered).

Once they are registered, they can log-in to open the shared file(s) using the access parameters that were assigned by the Author.



View File, Edit Parameters, Delete File, Share File
Block User, Get Original File, Download ctrlARM file, Print Activity report

 **Access Parameters:** 

File to upload:

Disposition: Shred Request Reauthorization Watermarks: Default Custom None

Global parameters:

From: To: Max opens: Share

Approved list:

When ctrlARM squeezes a file, it is a 'lossless' conversion so that the ctrlARM file will play or be viewed with the same quality as the original.

Access Control Examples

Complex: The legal department of large company needed to give Edward 'view only' access (no Printing or Saving allowed) to a confidential document with a serialized watermark for a brief period.

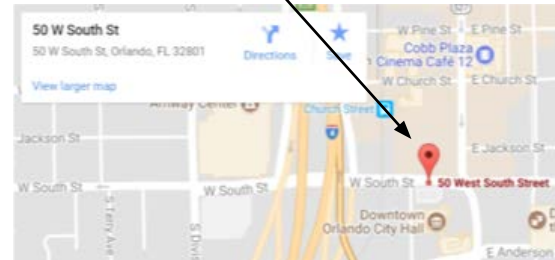
Access was granted to him for only January 10, 2019 between the hours of 04:00 and 06:00 GMT, from a device with MAC address 88:23:D4:F7:B7:89, and only while the device was at GPS location 28.6617053/-81.2458560 logged onto I.P. address 234.98.257.135.

When the time expired, his permission to access the file was automatically revoked.



File Activity Report

Date	User	Email	Name	Action	Details	Location
01/10/2018 05:23	Alex S	alex@dotkache.com	pdf-test.pdf	add		1451 99 St, North Battleford, SK S9A 0P9, Canada
01/10/2018 05:23	Edward H	ed@dotkache.com	blzPlanv3.pdf	open	Access allowed	2-50 W South St, Orlando, FL 32801, USA
01/10/2018 05:23	James R	JimmyD@yahoo.com	Protected.kache	open	Access denied. Allowed time elapsed.	Yellowhead Hwy, Denholm, SK S0M 0R0, Canada



ctrlARM Security

ctrlARM uses a proprietary data encryption methodology that incorporates blockchains to manage multiple versions of a file as it evolves during its lifespan.

Each 'version' can have a unique set of access control parameters so that access to the file can be controlled as the file evolves.

ctrlARM files created from MS Office files can be edited in 'real time' on a collaborative basis and all changes are tracked for future reference.

Prior versions of a file can be retrieved at any time.

In a recent test, we posted a ctrlARM file on several websites frequented by 'hackers' and offered a bounty to the first person to send us a screenshot of the original file. 18 self-proclaimed 'expert hackers' accepted our challenge.

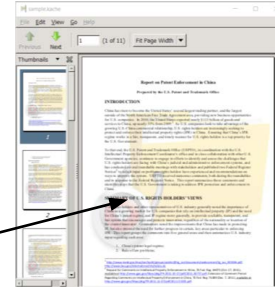
None were successful.

Watermarks

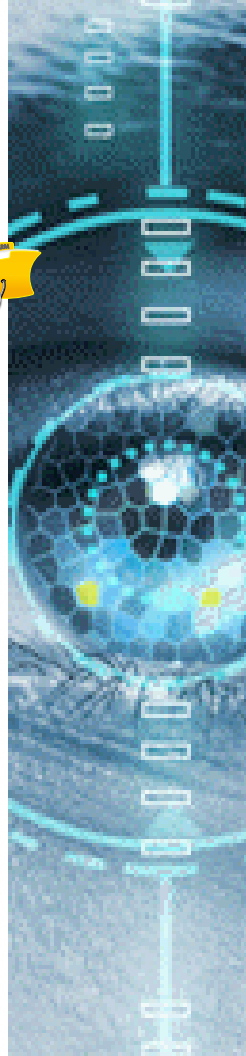
When a ctrlARM file is Opened, it is displayed with an embedded watermark.

Users can upload their own watermarks or logos if desired to assert their IP rights.

Watermarks can also contain a serial number to identify the Author.



Watermarks



Current Applications for ctrlARM:

Protect, Secure and Distribute:

- medical or customer records
- legal documents and contracts
- confidential government documents
- SEC filings
- financial records and statements
- tax returns
- digital media files
- corporate business plans, patents, product formulas or trade secrets

ctrlARM files created from MS Office files can be edited in 'real time' on a collaborative basis and all changes are tracked for future reference.

... ANY digital file that contains proprietary information OR data that the owner does not want to be exposed to the general public

Just a few of the file types that can be converted into the ctrlARM format and viewed

Raster images (JPG, PNG, GIF, etc)
Standard media file formats (AVI, MPn, OGG, etc)
MS Office files (DOC, XLS, CSV, PPT)
PDF
ZIP

Actually, ANY other file format (but can only be saved and not viewed)

ctrlARM (a division of The Clix Group LLC)

2265 Lee Road, Suite 101

Winter Park FL 32789

www.ctrlARM.com

info@ctrlARM.com

Demonstrations are available

(a signed NDA will be required)

